

# Treated VT/VF Episode #334

Device: **Virtuoso VR D164VWC**

Serial Number:

Date of Visit: **07-Dec-2009 12:08:11**

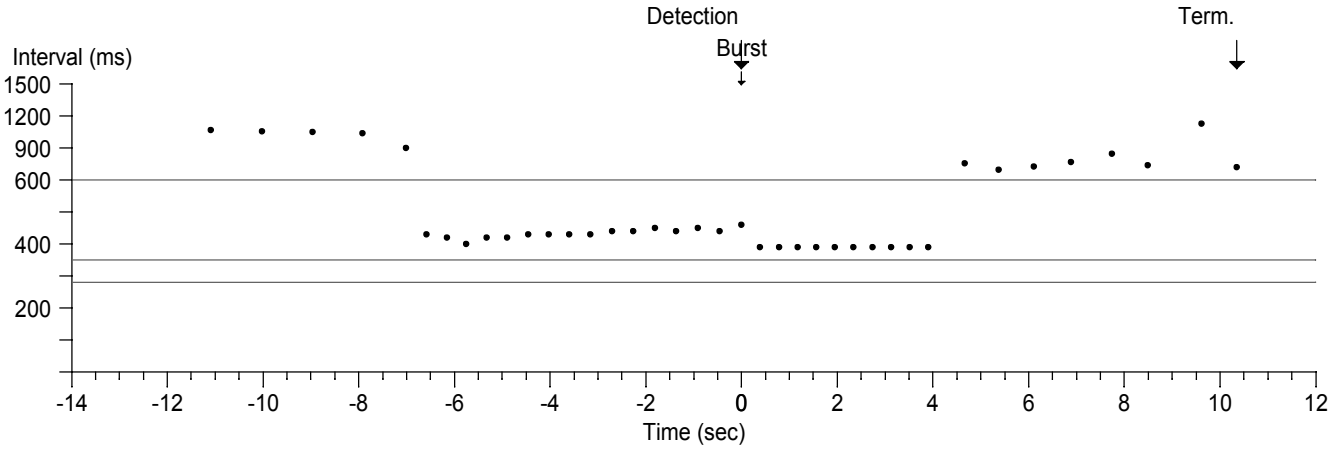
Patient:

ID:

Physician:

Type	ATP Seq	Shocks	Success	ID#	Date	Time hh:mm	Duration hh:mm:ss	Avg bpm V	Max bpm V	Activity at Onset
VT	1		Yes	334	09-Oct-2007	15:09	:11	136	136	Rest

• V-V      VF = 350 ms      FVT = 280 ms      VT = 600 ms



# Treated VT/VF Episode #334

Device: **Virtuoso VR D164VVC**

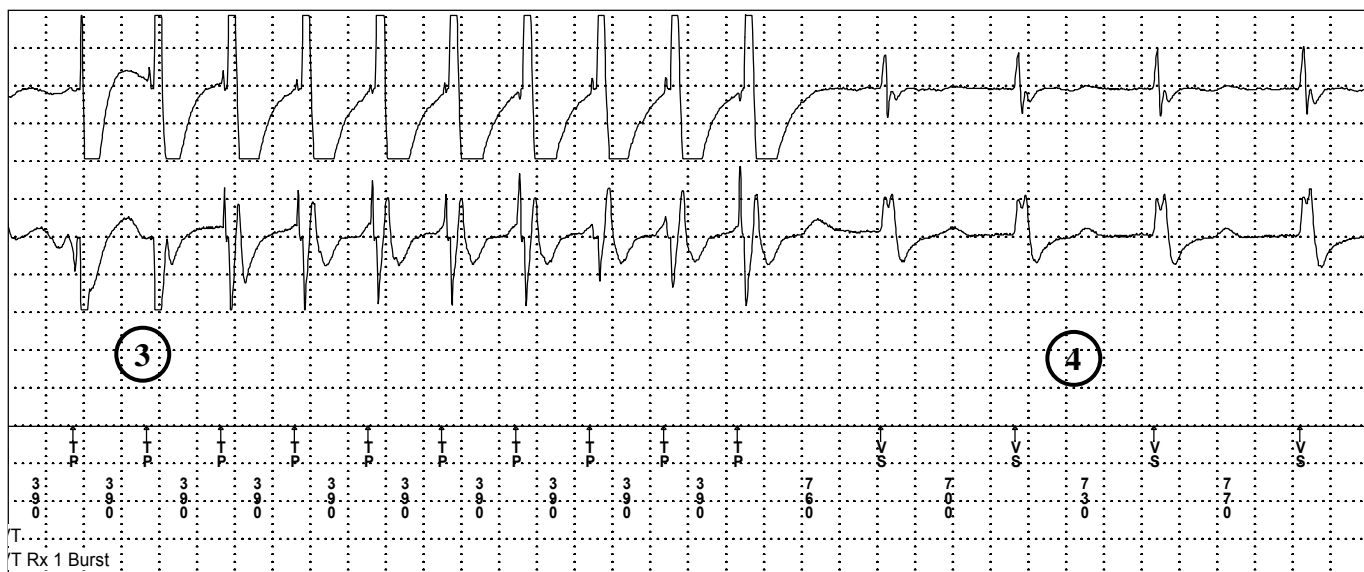
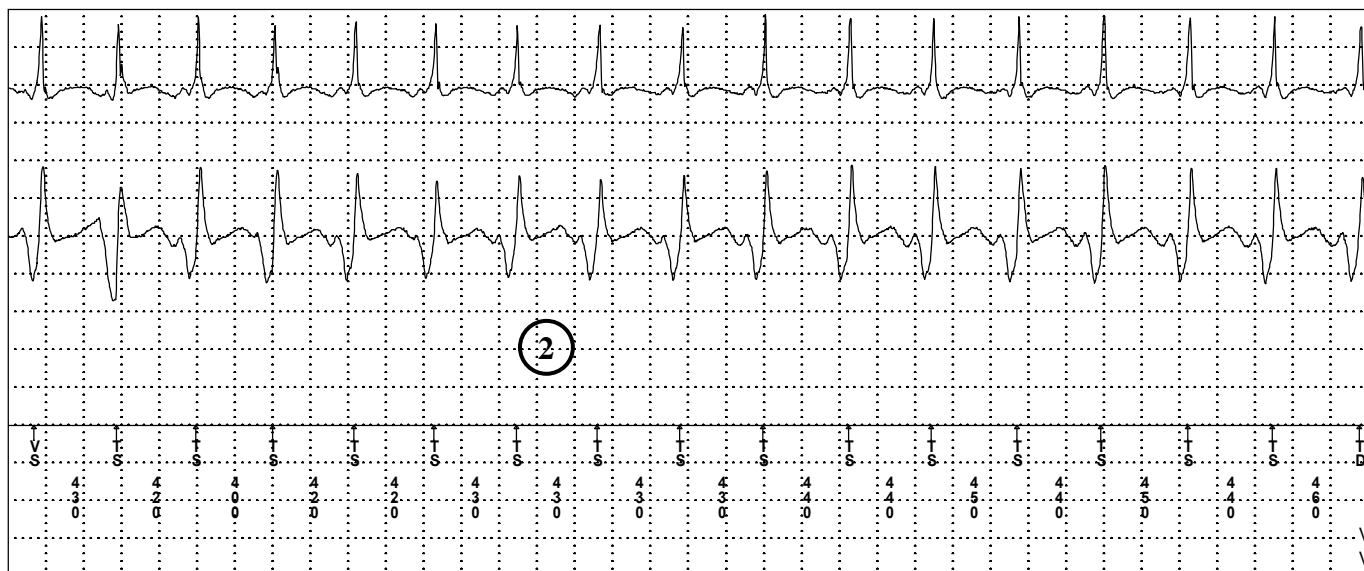
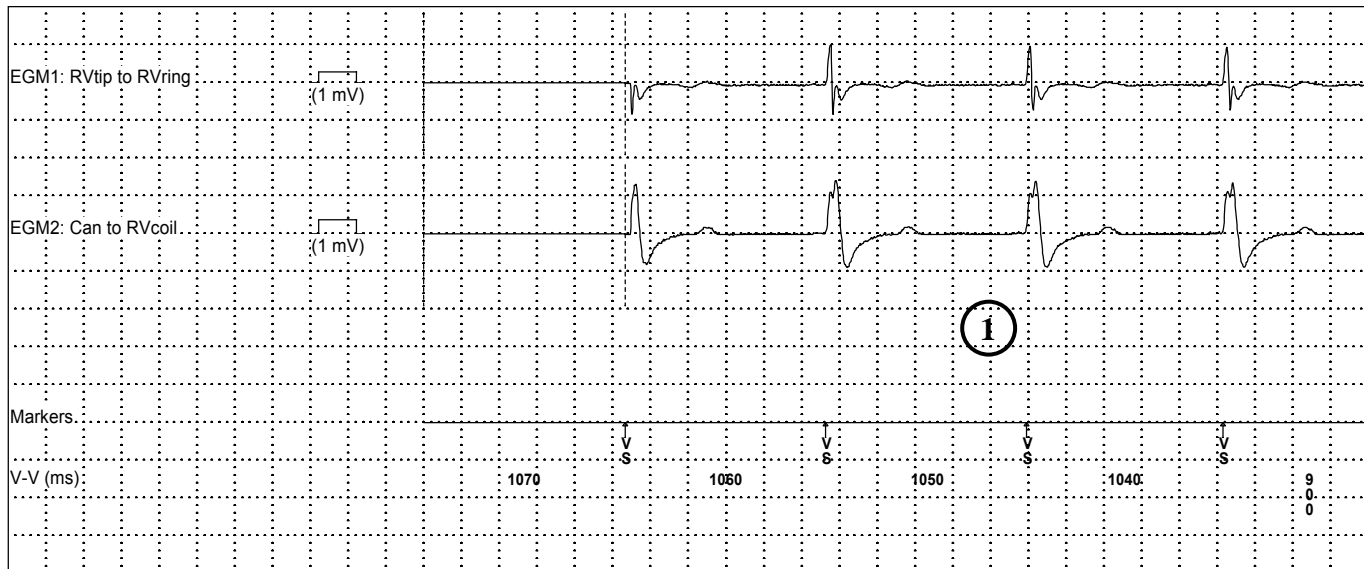
Serial Number:

Date of Visit: **07-Dec-2009 12:08:11**

Patient:

ID:

Episode #334 - VT Chart speed: 25.0 mm/sec



# Treated VT/VF Episode #334

Device: **Virtuoso VR D164VWC**

Serial Number:

Date of Visit: **07-Dec-2009 12:08:11**

Patient:

ID:

Physician:

**Episode #334: 09-Oct-2007 15:09:14**

**Episode Summary**

Initial Type VT (spontaneous)  
 Duration 11 sec  
 V. Max Rate 136 bpm  
 V. Median 136 bpm (440 ms)  
 V. Stability 10 ms - 20 ms  
 Activity at onset Rest, Sensor = 53 bpm  
 Last Therapy VT Rx1: Burst, Successful

**Initial VT/VF Detection**

**Withheld By**  
 None

**Therapies Delivered Charge Ohms Energy**

VT Rx 1 Burst Seq 1

Termination

**Wavelet Measurements Prior to Initial VT/VF Detection**

Wavelet Result: VT/VF  
 Template Status: Inconsistent with intrinsic rhythm

- 8. No Match 31 %
- 7. No Match 31 %
- 6. No Match 34 %
- 5. No Match 31 %
- 4. No Match 28 %
- 3. No Match 31 %
- 2. No Match 31 %
- 1. No Match 28 %
- 0. Detection

5

**Onset Criterion Result**

Sudden Onset - VT.

**Parameter Settings Initial Redetect V. Interval (Rate)**

Parameter	Settings	Initial	Redetect	V. Interval (Rate)
VF	On	12/16	9/12	350 ms (171 bpm)
FVT	via VF			280 ms (214 bpm)
VT	On	16	12	600 ms (100 bpm)
Monitor	Off	20		

**Wavelet**

Wavelet Monitor, Match = 70 %  
 Template 06-Oct-2007, Auto = On  
 SVT V. Limit 320 ms

**Other Enhancements**

Stability 40 ms  
 Onset On (81%)  
 High Rate Timeout Off

6

EGM	EGM1	EGM2	Sensitivity	
Source	RVtip to RVring	Can to RVcoil	RV	0.45 mV
Range	+/- 8 mV	+/- 8 mV		