

Treated VT/VF Episode #65

Device: **Evera XT VR DVBB2D4**

Serial Number:

Date of Visit: **02-Feb-2015 11:56:38**

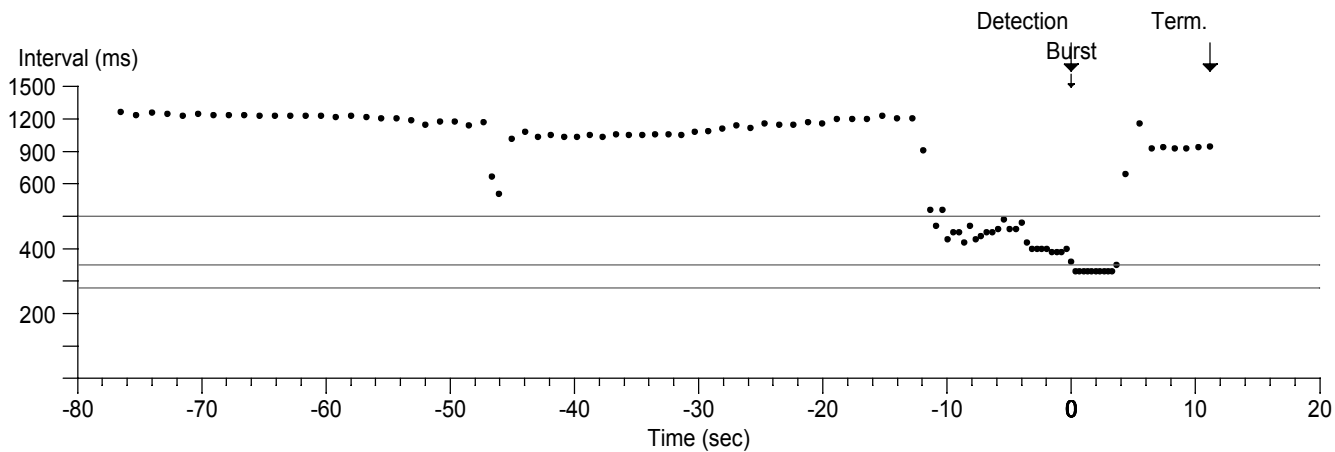
Patient:

ID:

Physician:

Type	ATP Seq	Shocks	Success	ID#	Date	Time hh:mm	Duration hh:mm:ss	Avg bpm V	Max bpm V	Activity at Onset
VT	1		Yes	65	10-Sep-2014	04:54	:13	158	---	Rest

• V-V VF = 350 ms FVT = 280 ms VT = 500 ms



Treated VT/VF Episode #65

Device: **Evera XT VR DVBB2D4**

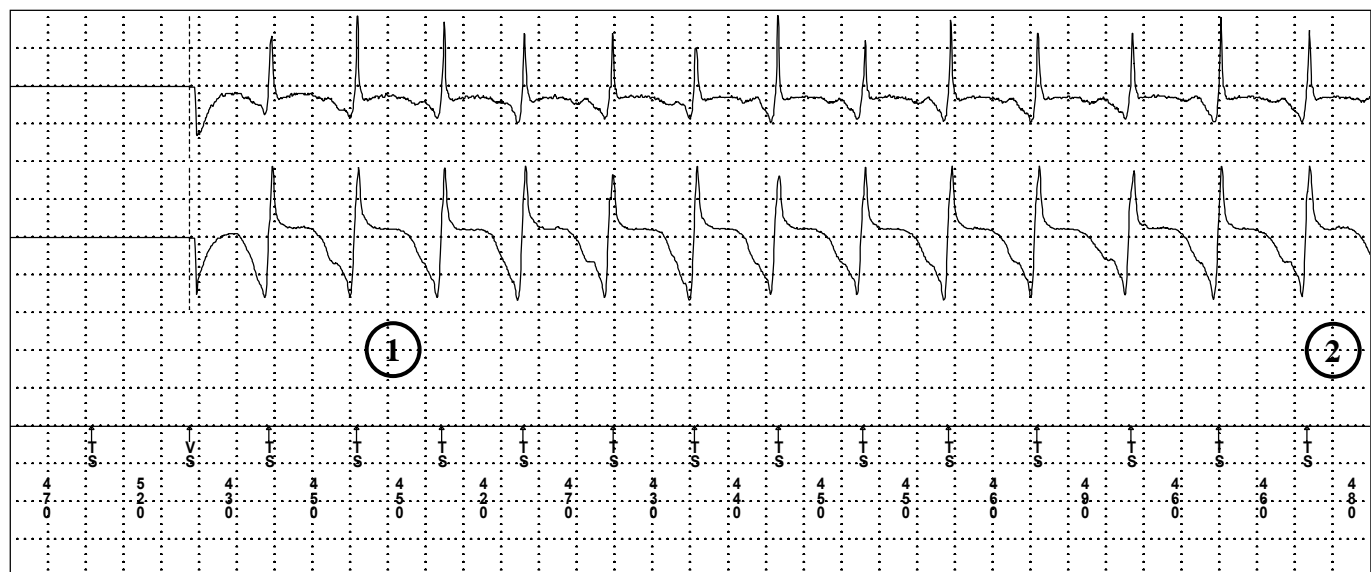
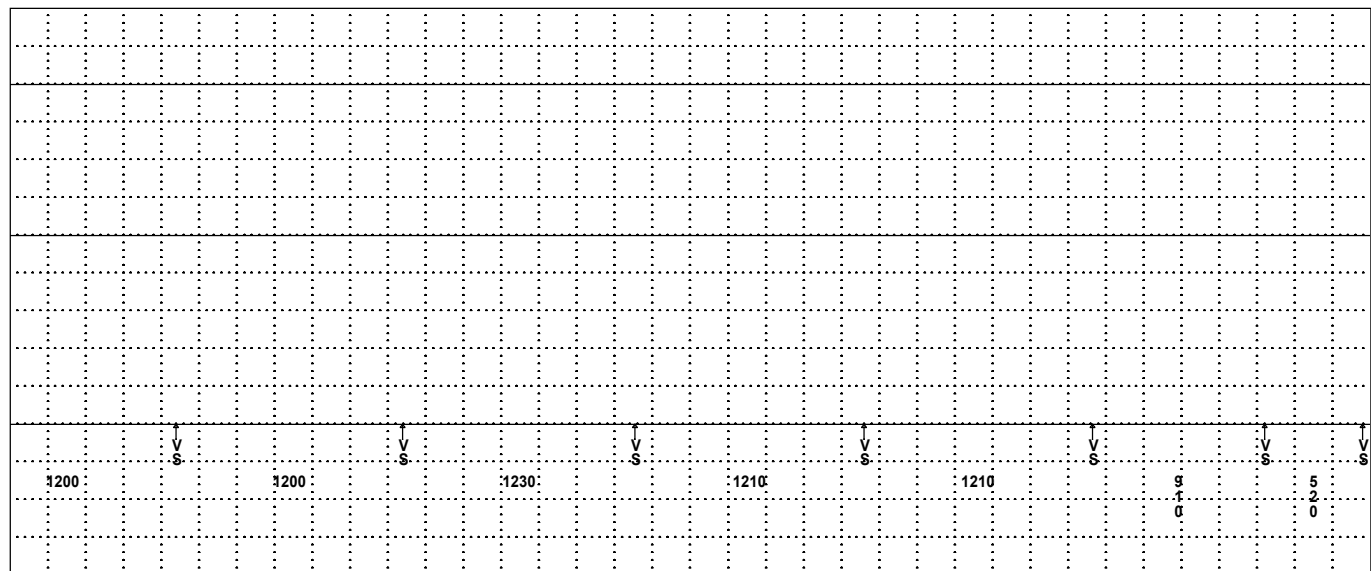
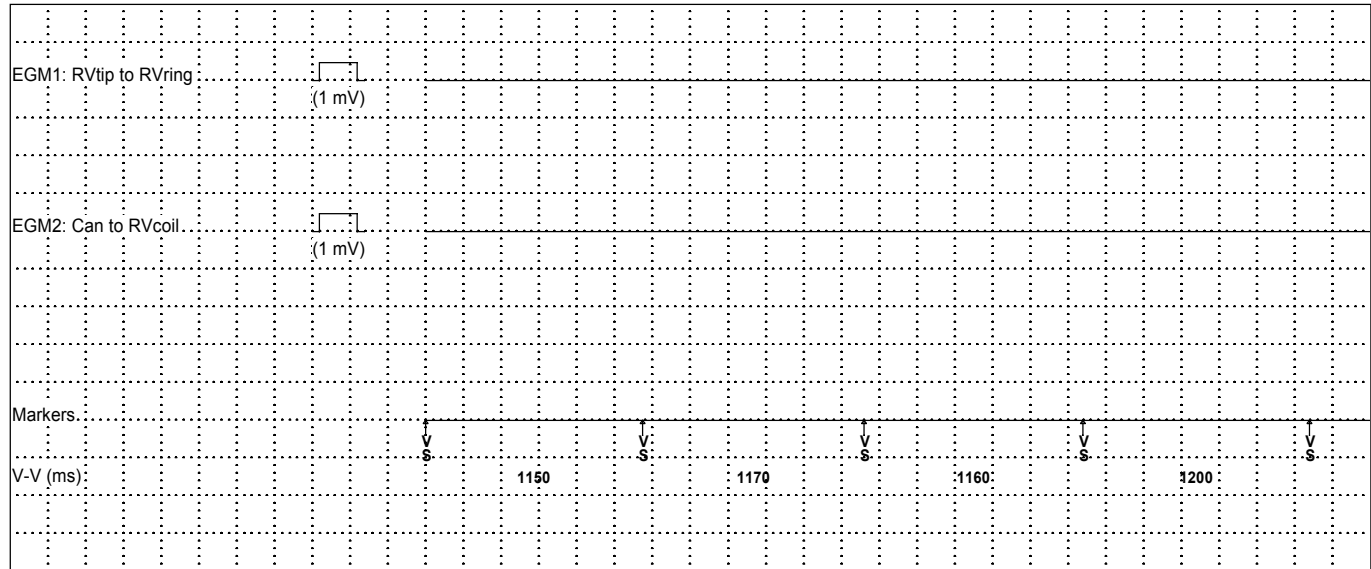
Serial Number:

Date of Visit: **02-Feb-2015 11:56:38**

Patient:

ID:

Episode #65 - VT Chart speed: 25.0 mm/sec



Treated VT/VF Episode #65

Device: **Evera XT VR DVBB2D4**

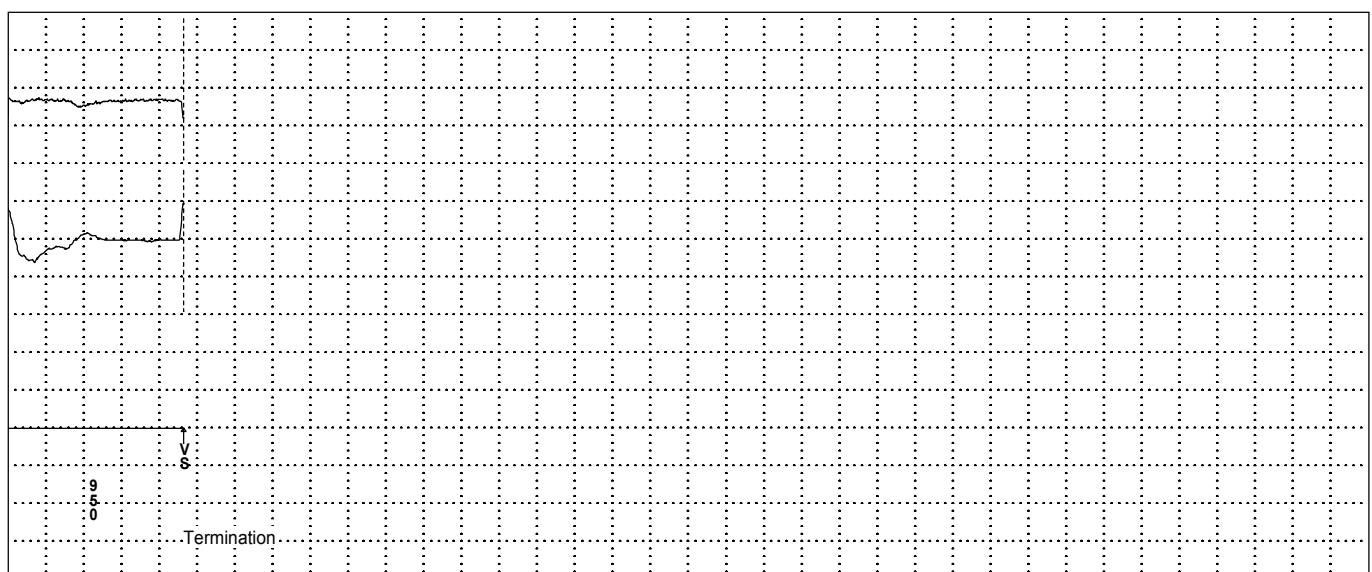
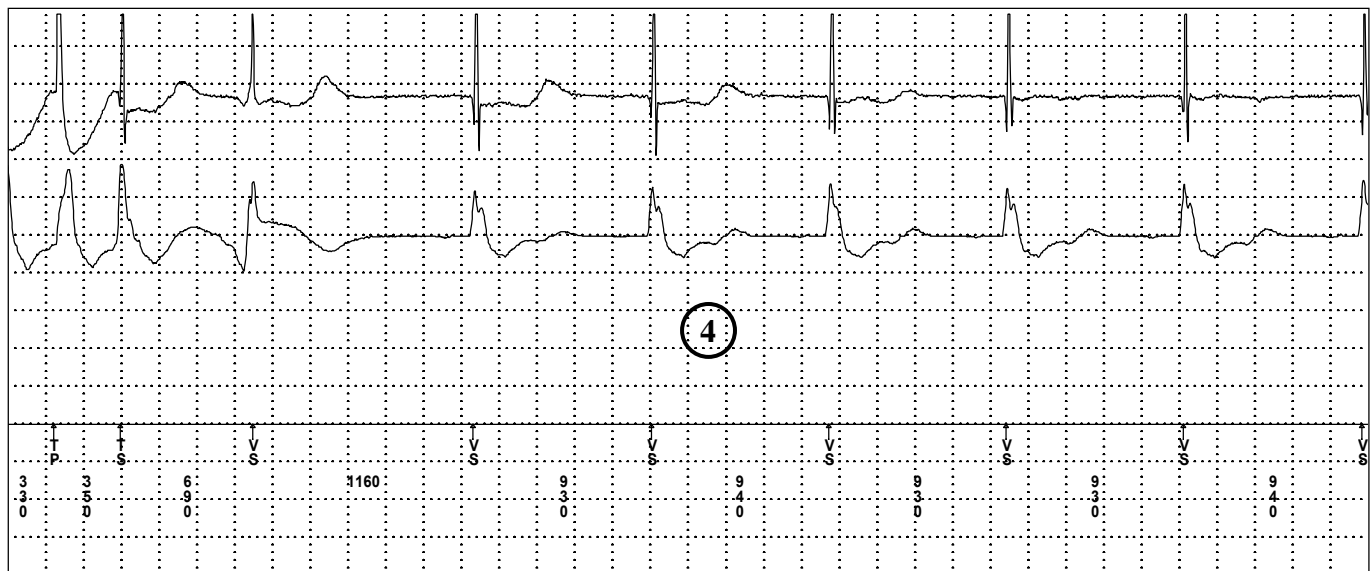
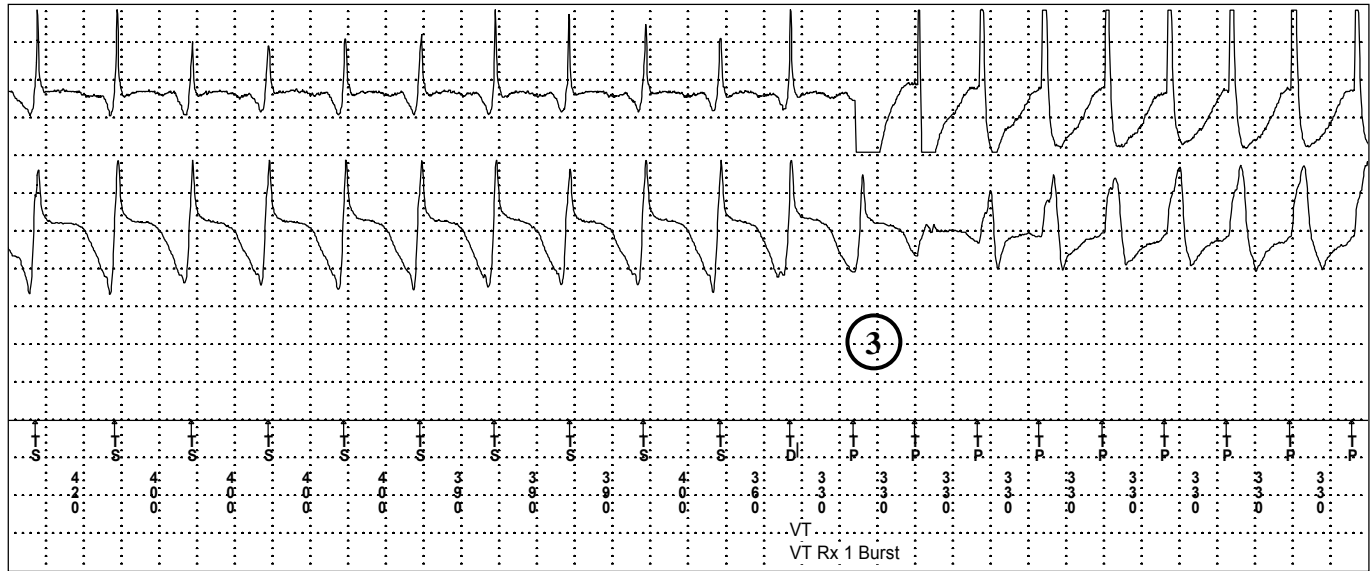
Serial Number:

Date of Visit: **02-Feb-2015 11:56:38**

Patient:

ID:

Episode #65 - VT Chart speed: 25.0 mm/sec



Treated VT/VF Episode #65

Device: **Evera XT VR DVBB2D4**

Serial Number:

Date of Visit: **02-Feb-2015 11:56:38**

Patient:

ID:

Physician:

Episode #65: 10-Sep-2014 04:54:13

Episode Summary

Initial Type VT (spontaneous)
 Duration 13 sec
 V. Max Rate ---
 V. Median 150 bpm (400 ms)
 V. Stability 10 ms - 30 ms
 Activity at onset Rest, Sensor = 40 bpm
 Last Therapy VT Rx1: Burst, Successful

Initial VT/VF Detection Withheld By

None

Therapies Delivered Charge Ohms Energy

VT Rx 1 Burst Seq 1

Termination

Wavelet Measurements Prior to Initial VT/VF Detection

Wavelet Result: VT/VF
 Template Status: OK

- 8. No Match 22 %
- 7. No Match 22 %
- 6. No Match 10 %
- 5. No Match 13 %
- 4. No Match 13 %
- 3. No Match 13 %
- 2. No Match 16 %
- 1. No Match 10 %
- 0. Detection

5

Parameter Settings Initial Redetect V. Interval (Rate)

VF	On	24/32	9/12	350 ms (171 bpm)
FVT	via VF			280 ms (214 bpm)
VT	On	24	12	500 ms (120 bpm)
Monitor	Monitor	28		600 ms (100 bpm)

Wavelet

Wavelet On, Match = 70 %
 Template 25-Apr-2014, Auto = On
 SVT V. Limit 280 ms

Other Enhancements

Stability Off
 Onset Off
 High Rate Timeout
 VF Zone Only 0.75 min
 All Zones Off
 TWave On
 RV Lead Noise On+Timeout
 Timeout 0.75 min

6

Polarity RV

Pace Polarity Bipolar
 Sense Polarity Bipolar

EGM	Source	Range	Sensitivity
EGM1	RVtip to RVring	+/- 8 mV	RV 0.3 mV
EGM2 (Wavelet)	Can to RVcoil	+/- 4 mV	